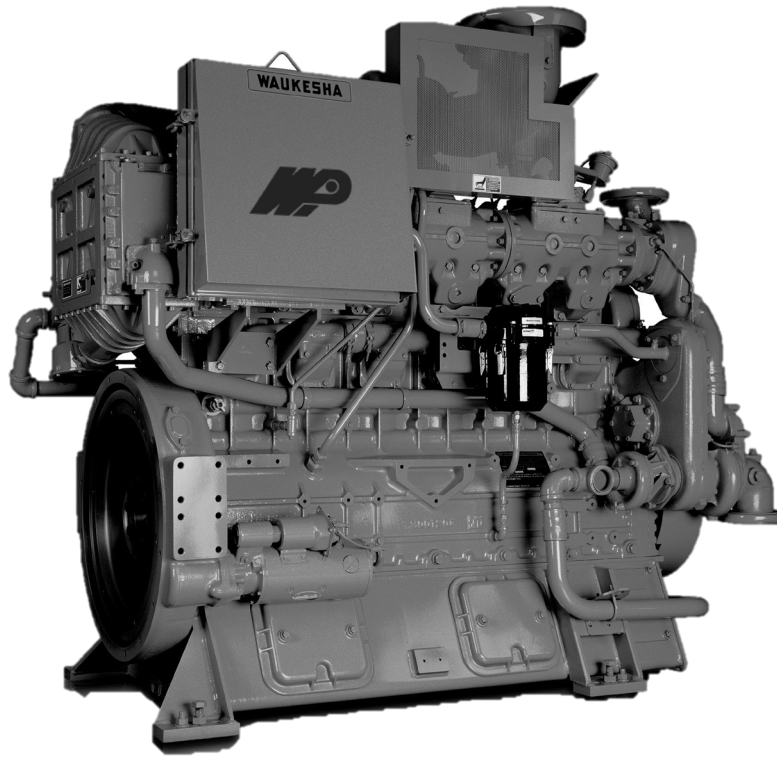


Waukesha F18GSI-LCR/HCR



Model	F18GSI-LCR/HCR	
Horsepower	355 – 585	
Fuel Type	Natural Gas	
Cylinders	8	
Displacement	1462 cu in	
Compression Ratio	LCR 8.7:1	HCR 11:1
Bore & Stroke	5.98 in x 6.5 in	
Starting System	150 psi max. air/gas 24V DC electric	

