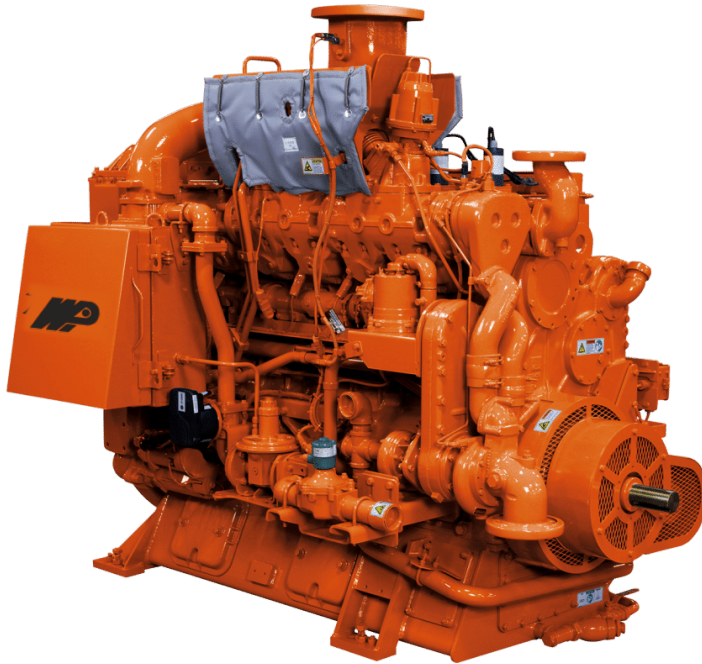


VGF F18SE/H24SE

With emPact Emission Control System

310-400 BHP (230-300 kWb) | 415 - 530 BHP (310 - 400 kWb)



Engine Features

For almost 100 years, WPI has provided clients with products and services that **Deliver More Uptime™**.

The VGF* series of high-speed engines are built with the durability expected from a medium-speed engine. The SE family of VGF engines with ESM* features its class's most advanced and comprehensive control capability. There are multiple options for AFR control, INNIO catalysts, and NOx ratings. Non-road EPA mobile and stationary certification is available direct from INNIO as part of the mobileFLEX* product line. System reliability and performance upgrades have also been integrated into the turbocharging wastegate, oil filtration, cooling, crankcase breathing, and cylinder heads.

Waukesha's emPact* Emission Control System combines an engine, catalyst, and air/fuel ratio control, factory designed for enhanced interaction and improved performance. It comprises a factory-supplied catalyst, pre- and post-catalyst oxygen sensing, and differential temperature and pressure sensors.

The emPact display panel provides real-time engine operating parameters, including faults, alarms, logs, and shutdowns. Waukesha's emPact Emission Control System provides a one-stop shop for compliance and a simple method of obtaining and meeting emission permits.

The Waukesha VGF series has delivered consistent critical power from a proven and reliable platform for more than three decades. Ideally suited for various mobile and stationary applications, VGF high-horsepower engines feature smart controls and fuel flexibility. This enables users to maximize performance and durability while serving prime or backup power generation applications.

Additional VGF models to consider:

- VGF L36GSI
- VGF P48GSI

Technical Data

VGF F18SE

Cylinders	Inline 6
Piston displacement	1,096 cu. in. (18 L)
Compression ratio	8.6:1
Bore & stroke	5.98" x 6.5" (152 x 165 mm)
Jacket water system capacity	16 gal. (60 L)
Lube oil capacity	44 gal. (166 L)
Fuel Pressure Range	1.5 - 5.0 psig (0.1 - 0.34 bar)
Starting system	120 psi max. air/gas 24V DC electric

VGF F24SE

Cylinders	Inline 8
Piston displacement	1,462 cu.in. (24 L)
Compression ratio	8.6:1
Bore & stroke	5.98" x 6.5" (152 x 165 mm)
Jacket water system capacity	20 gal. (75 L)
Lube oil capacity	56 gal. (212 L)
Fuel Pressure Range	1.5 - 5.0 psig (0.1 - 0.34 bar)
Starting system	120 psi max. air/gas 24V DC electric



WPI.com/Engines